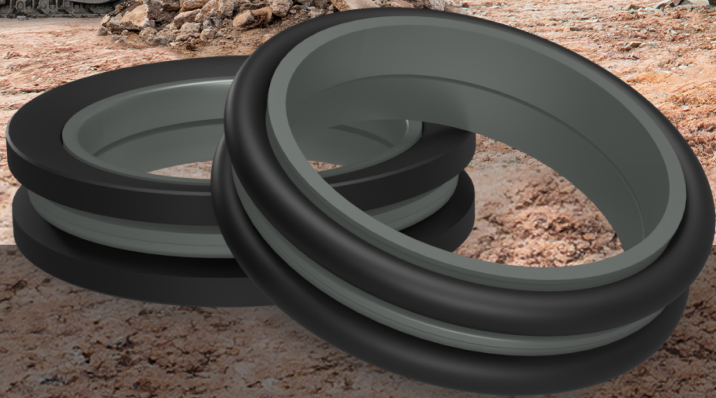




Hi-Tech Seals

Mechanical Face Seals



Engineered to deliver superior protection against contaminants in extremely harsh environments.

Our Mechanical Face Seals, also known as floating seals, face seals, Duo-Cone™ seals, lifetime seals, heavy-duty seals, or toric seals, are widely used in heavy-duty rotational applications, particularly in environments exposed to harsh conditions, such as dirt, dust, mud, water, and aggressive fluids.

Mechanical Face Seals Advantages:

- Cost-effective
- Simple, reliable design
- Increased operational lifespan
- Ease of installation and replacement
- Excellent at retaining lubricants
- Outstanding at preventing contaminants from entering
- Self-centering to compensate for shaft eccentricity and misalignment
- Exceptional resistance to severe wear, abrasion, and corrosive media

These seals are designed to withstand severe wear and resist abrasive and corrosive media. Mechanical Face Seals are reliable sealing components that promote uninterrupted operations, prolong maintenance intervals, and contribute to the overall longevity of machinery and equipment.



Applications

Mechanical Face Seals are commonly found in axles, final drives, idlers, transmissions, conveyors, pumps, rollers, tunnel boring cutters, undercarriages, wet braking systems, gearboxes, mixers, stirrers, and mobile track systems. These seals are used for the operations of the following machinery and equipment, including but not limited to:

- Excavators
- Concrete Mixers and Cement Trucks
- Tractors
- Bulldozers
- Haul Trucks
- Harvesters
- Loaders
- Tunnel Boring Machines
- Mining Conveyors
- Dump Trucks
- Cutter Rollers
- Forestry Equipment

Profiles

We offer two types of Mechanical Face Seal profiles: DO Type and DF Type.

DO type is the most common type that employs an O-ring made of elastomer material for the secondary seal. The DO profile requires less radial space within the application. It delivers excellent stability in the housing prior to final assembly and excellent end-play capability.

DF type features a diamond or trapezoidal elastomer ring as a secondary seal. The DF profile requires less axial space within the application and fits into a square bore housing cavity, which reduces machining time. No assembly tool or lubricant is required during installation.

Materials

Our Mechanical Face Seals metal materials are manufactured from alloy cast iron or forged steel. The elastomer ring material is commonly nitrile, but other materials are available, including hydrogenated nitrile, silicone, and fluoroelastomer.



DO Type

DF Type



hitechseals.com



info@hitechseals.com



[linkedin.com/company/hitechseals](https://www.linkedin.com/company/hitechseals)

